



Hemlock Street, London, E14 0XW

£577 Per Week

BRAND NEW TWO BEDROOM TWO BATHROOM APARTMENT IN BOWLINE HOUSE PART OF THE SOUGHT AFTER POPLAR RIVERSIDE DEVELOPMENT

OFFERED FURNISHED & AVAILABLE NOW

Our recently completed apartment comprises a spacious dual aspect reception room with a fully fitted luxury kitchen and access to both an East facing terrace and a South facing balcony. Both the bedrooms are good sized double with floor to ceiling windows and ample built in wardrobes to the master, off the hallway is a designer bathroom and a utility cupboard

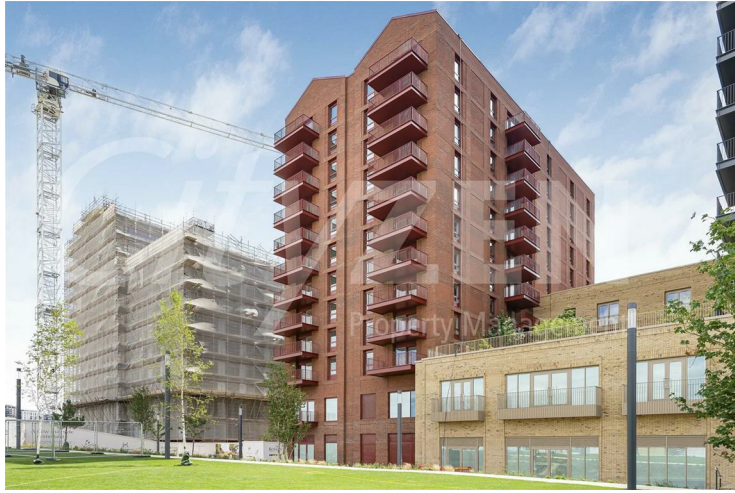
The development offers amenities inc: a gym (open now) as well as a swimming pool, cinema, co-working spaces, residents' lounges & games room (opening April 26)

Amazing zone 2/3 location with choice of 3 DLR stations as well as being close to Canary Wharf

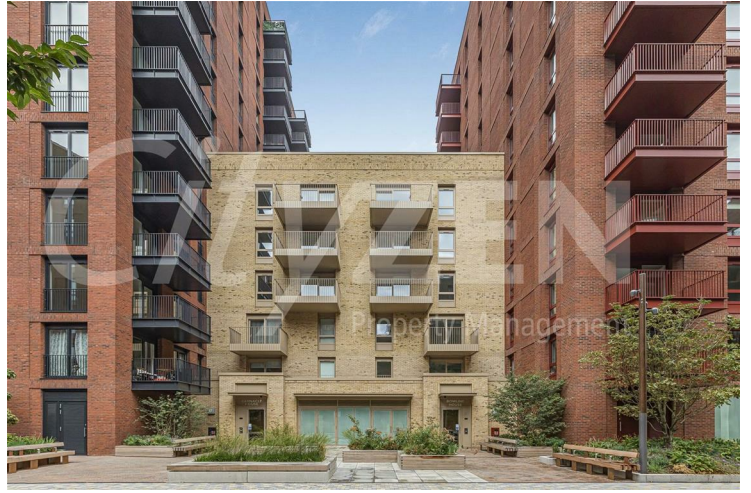
FURNISHED
AVAILABLE NOW

- POPLAR RIVERSIDE DEVELOPMENT
- BRAND NEW TWO BEDROOM TWO BATHROOM FLAT
- RESIDENTS AMENITIES
- AVAILABLE NOW
- ZONE 2/3
- TERRACE AND A BALCONY
- HIGH SPECIFICATION
- CHOICE OF 3 DLR STATIONS
- SET OVER 760 SQ FEET
- OFFERED FURNISHED

Hemlock Street, London, E14 0XW



BOWLINE HOUSE



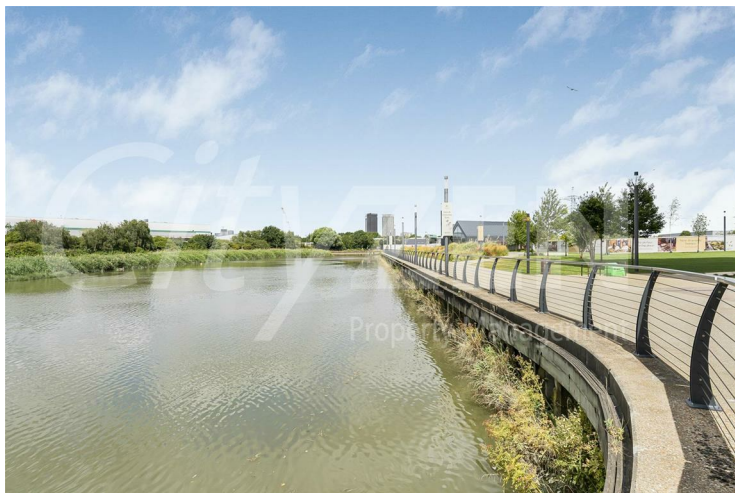
ENTRANCE



BOWLINE HOUSE



RECEPTION



CANAL



KITCHEN

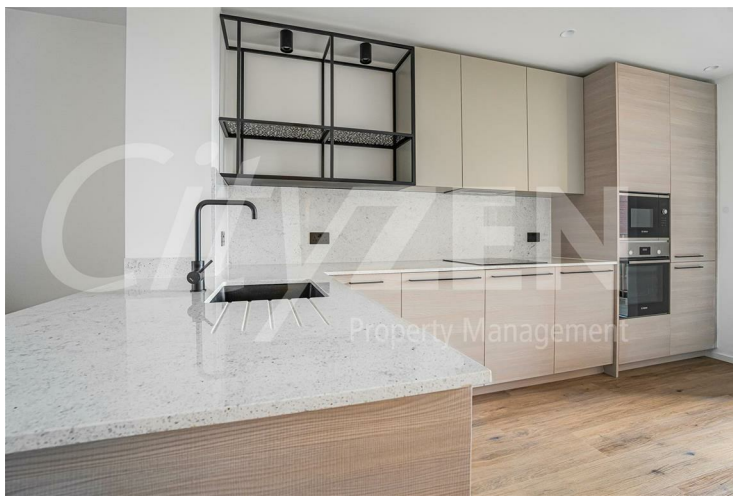
Hemlock Street, London, E14 0XW



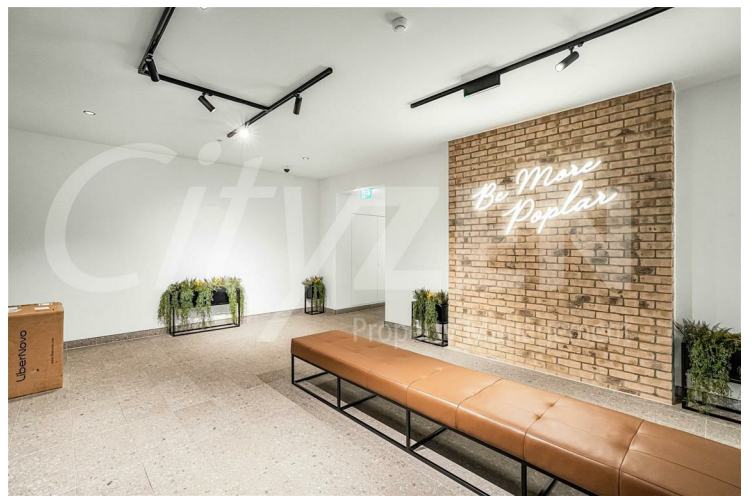
BEDROOM



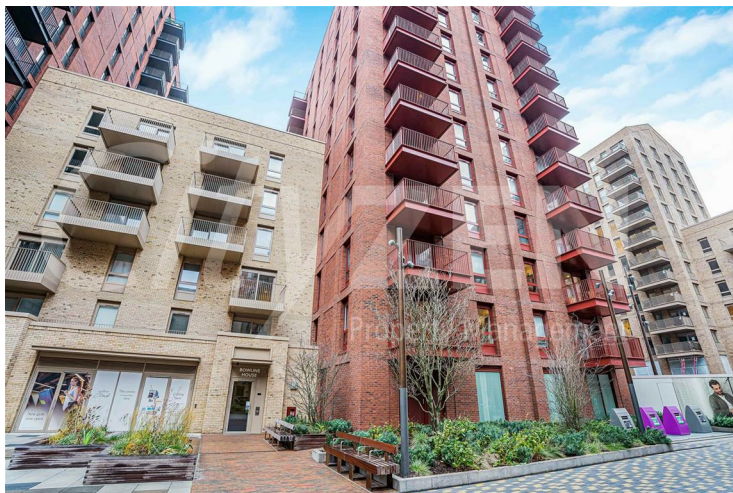
BOWLINE HOUSE



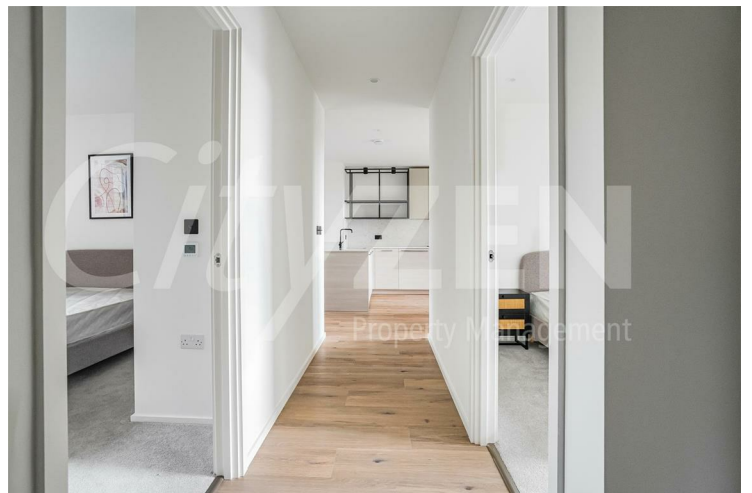
KITCHEN



LOBBY



BOWLINE HOUSE



HALLWAY

Hemlock Street, London, E14 0XW



BEDROOM



BEDROOM



BEDROOM



EN-SUITE



BEDROOM



BEDROOM

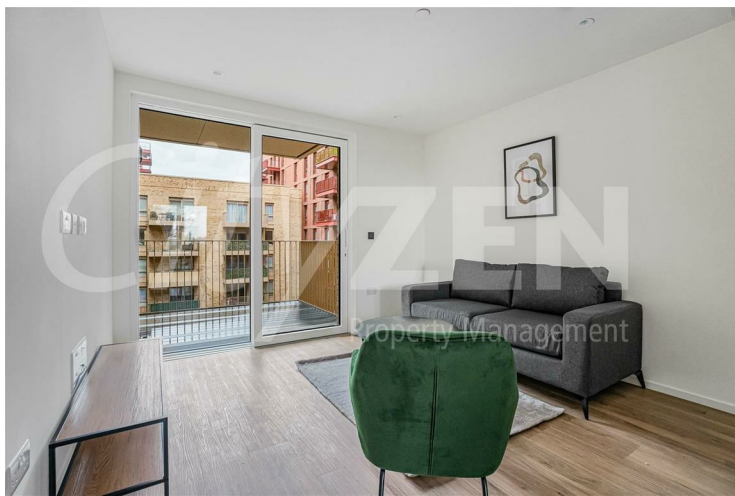
Hemlock Street, London, E14 0XW



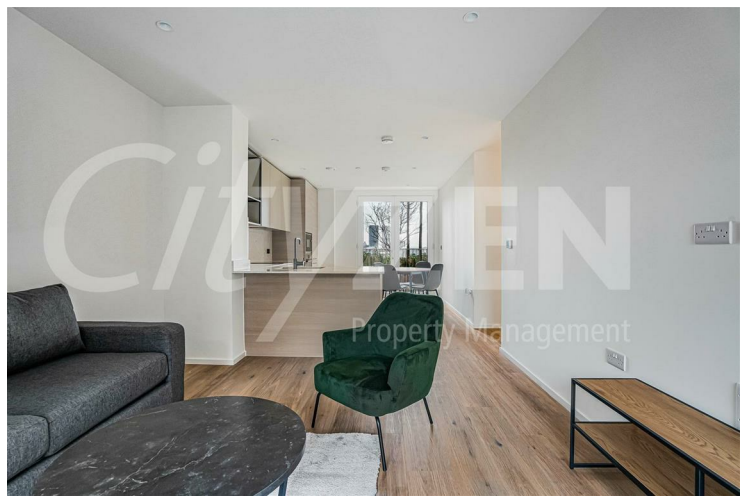
BEDROOM



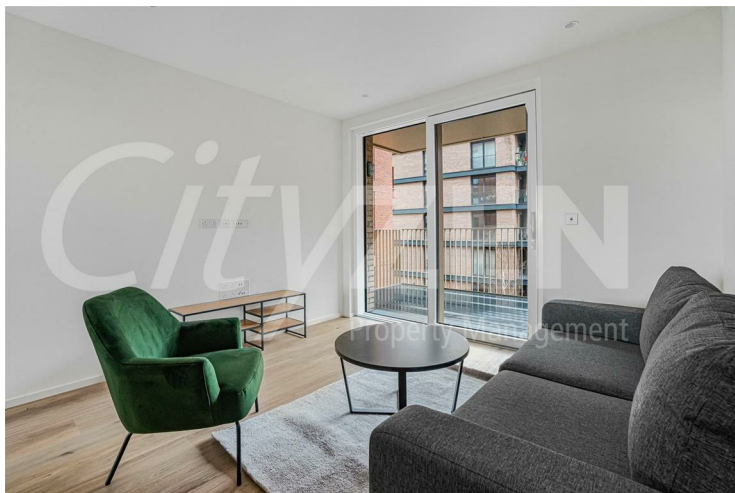
RECEPTION



RECEPTION



RECEPTION



RECEPTION

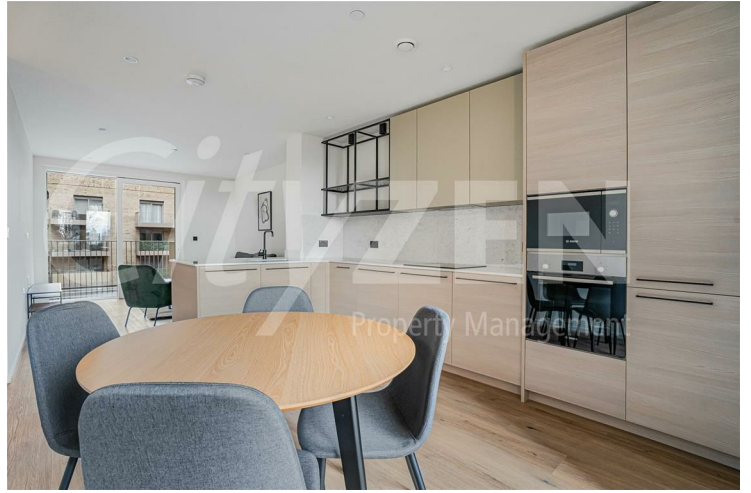


KITCHEN

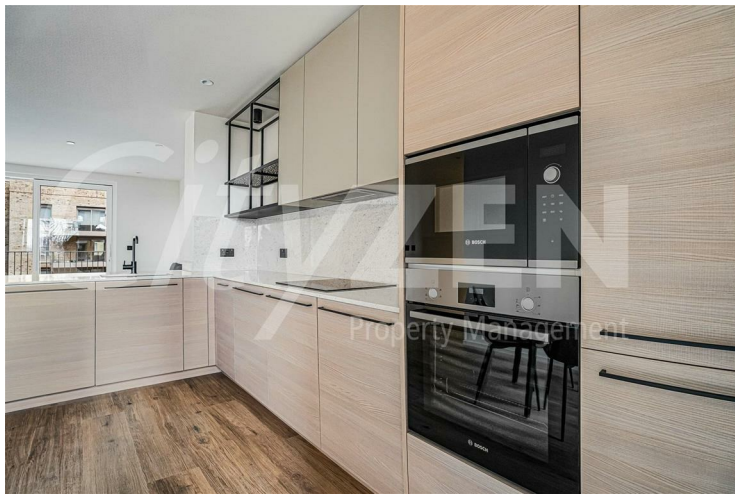
Hemlock Street, London, E14 0XW



KITCHEN



KITCHEN



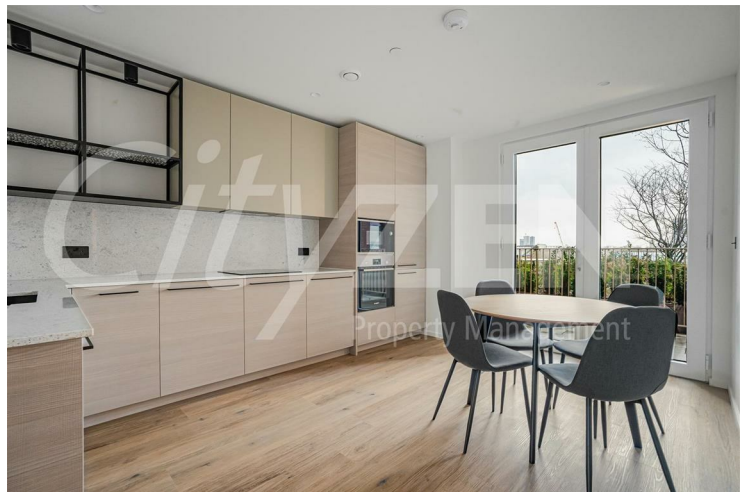
KITCHEN



KITCHEN



DINING AREA



KITCHEN

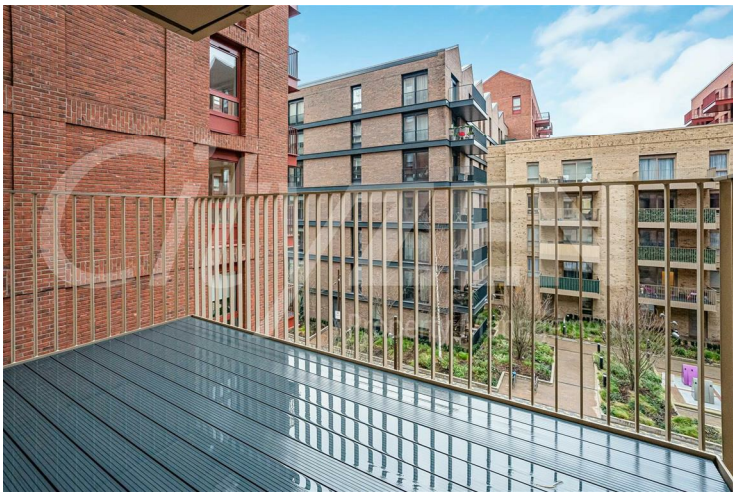
Hemlock Street, London, E14 0XW



BALCONY



VIEW FROM APARTMENT



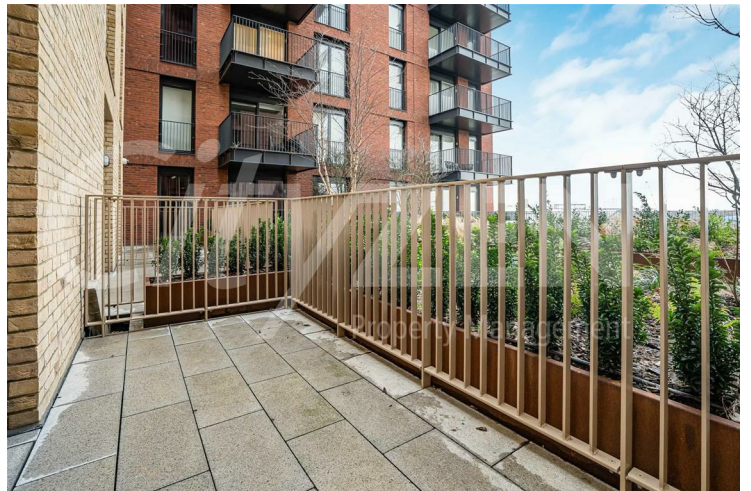
BALCONY



VIEW FROM APARTMENT

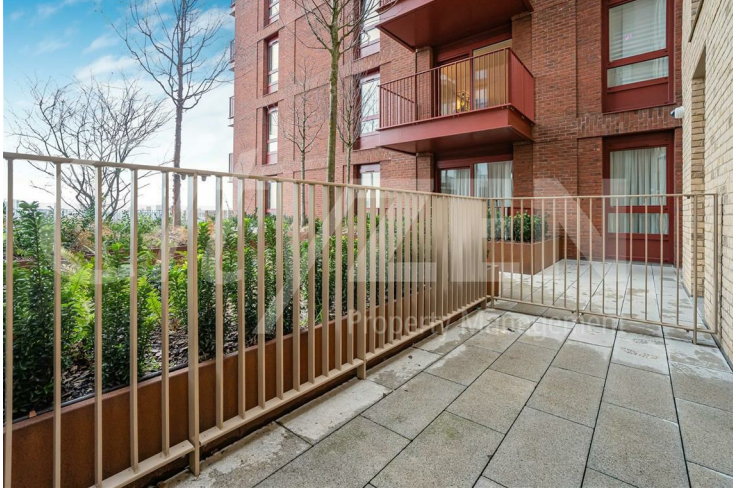


BALCONY

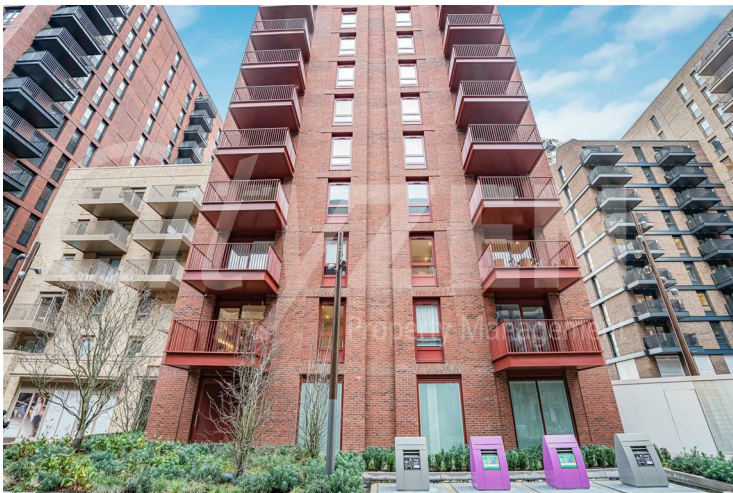


TERRACE

Hemlock Street, London, E14 0XW

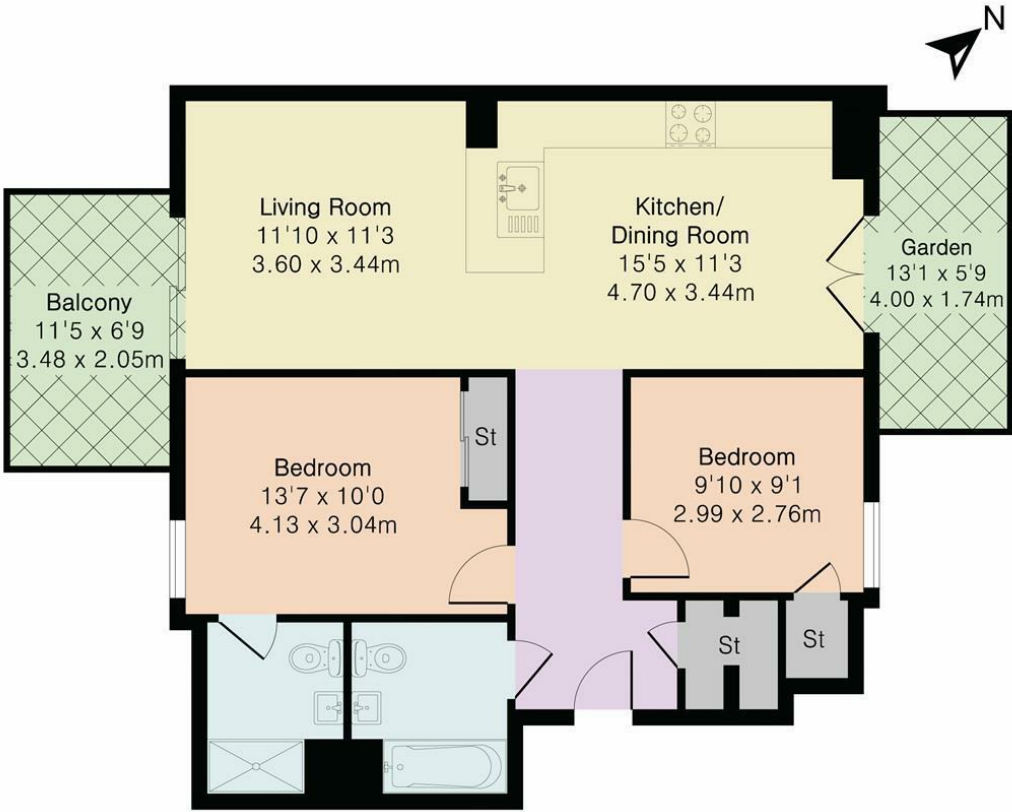


TERRACE



BOWLINE HOUSE

Approximate Gross Internal Area 764 sq ft - 71 sq m



Floor plan produced in accordance with RICS Property Measurement 2nd Edition. Although Pink Plan Ltd ensures the highest level of accuracy, measurements of doors, windows and rooms are approximate and no responsibility is taken for error, omission or misstatement. These plans are for representation purposes only and no guarantee is given on the total square footage of the property within this plan. The figure icon is for initial guidance only and should not be relied on as a basis of valuation.



Energy Efficiency Rating		
	Current	Potential
Very energy efficient - lower running costs		
(92 plus) A		
(81-91) B	85	85
(69-80) C		
(55-68) D		
(39-54) E		
(21-38) F		
(1-20) G		
Not energy efficient - higher running costs		
England & Wales EU Directive 2002/91/EC		
Environmental Impact (CO ₂) Rating		
	Current	Potential
Very environmentally friendly - lower CO ₂ emissions		
(92 plus) A		
(81-91) B		
(69-80) C		
(55-68) D		
(39-54) E		
(21-38) F		
(1-20) G		
Not environmentally friendly - higher CO ₂ emissions		
England & Wales EU Directive 2002/91/EC		

We have prepared these property particulars as a general guide to a broad description of the property. They are not intended to constitute part of an offer or contract. We have not carried out a structural survey and the services, appliances and specific fittings have not been tested. All photographs, measurements, floorplans and distances referred to are given as a guide only and should not be relied upon for the purchase of carpets or any other fixtures or fittings. Lease details, service charges and ground rent (where applicable) and council tax are given as a guide only and should be checked and confirmed by your Solicitor prior to exchange of contracts.